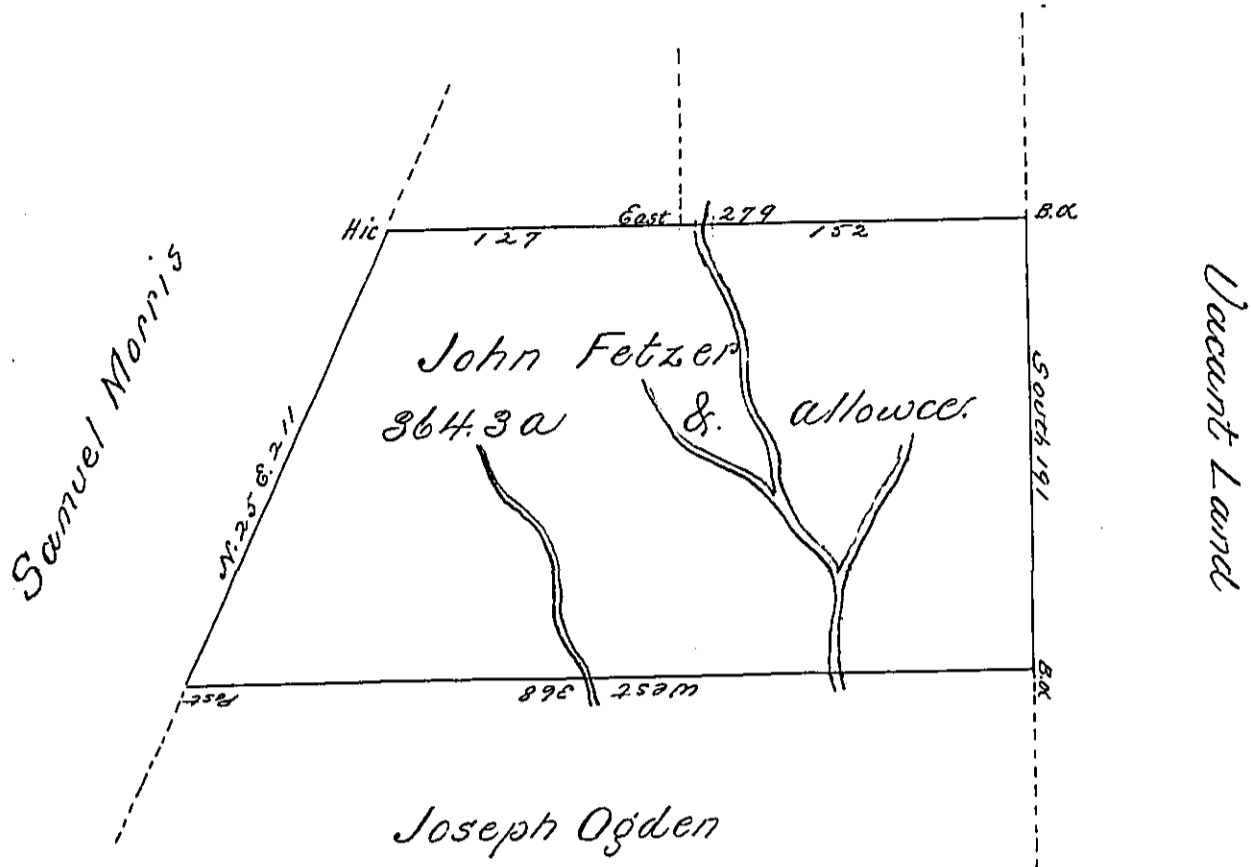


John Delany

William Craig



Survey'd to John Fetzer on the 7th day of November 1774 The above Described Tract of Three hundred sixty four acres & a quarter of an acre & the usual allowance of six p^{ct}. Situate adjoining Land survey'd to William Craig in Westmoreland County By Warrant of the 20th. Day of January 1774.

p. Joshua Elder U.S.

To John Lukens Esqr S. Genl.

IN TESTIMONY that the above is a copy of the original remaining on file in the Department of Internal Affairs of Pennsylvania, made conformably to an Act of Assembly approved the 16th day of February, 1833, I have hereunto set my Hand and caused the Seal of said Department to be affixed at Harrisburg, this seventh day of November 1899

James W. Latta
Secretary of Internal Affairs.